

# Enterprise Pro Surveillance Software

*Quick Start Reference Guide*

# Table of Contents

1) Overview.....	2
2) Initial Setup – Adding a Connection.....	3
3) Viewing Live Cameras.....	6
4) Single or Multi Channel Playback.....	7

## 1) Overview:

The Enterprise Pro Surveillance System (EPSS for short) is our standalone, client software. The EPSS software will manage connections into any ICREaltime Flex or Max series DVR system. This is a great solution for users who don't wish to use the Internet Explorer web interface, or for users who have multiple recorders they would like to centrally view and manage.

The EPSS will permanently store up to 500 different camera locations, and can concurrently connect and display 36 different IP addressed DVRs.

## 2) Initial Setup – Adding a New Connection

This chapter will walk you through the initial setup of your EPSS software. The first step after installation is traditionally to add your connection information into the software.

Step 1: Start off by launching the EPSS Basic software application. If you haven't changed it yet, use the user name "admin" and password as "admin". See Figure 2-1.



Figure 2-1

Step 2: Once logged in to the software, under the 'Device Tab' on the right side, click on the 'Mouse and Tower' like icon to the right, which your button for 'Device Management'. See Figure 2-2.

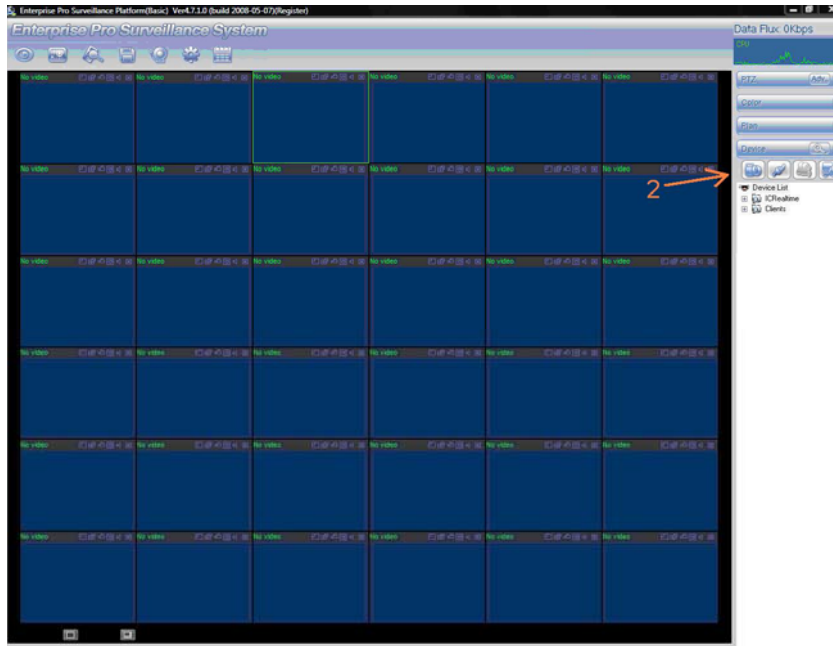


Figure 2-2

Step 3: In this next window, click on 'Add' under the Device List window to Input your Device Information. See Figure 2-3.

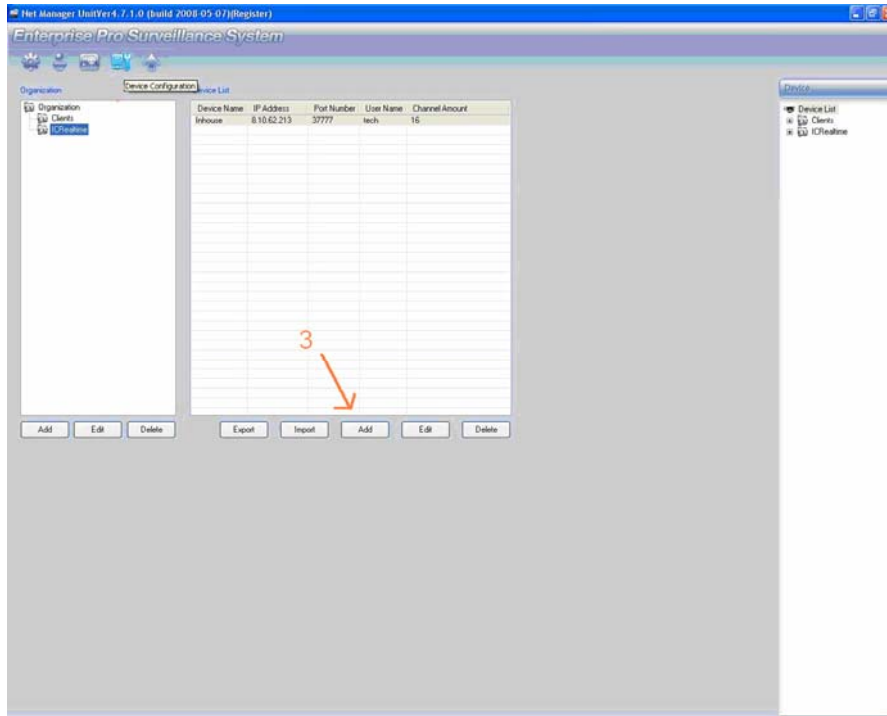


Figure 2-3

Step 4: From the 'Add a device' screen, assign the DVR a unique name for 'Device Name', and fill out the 'IP Address', 'User Name', and 'Password' fields. Click 'save' when you have all these settings. You should now see your DVR name under the device list. See Figure 2-4.

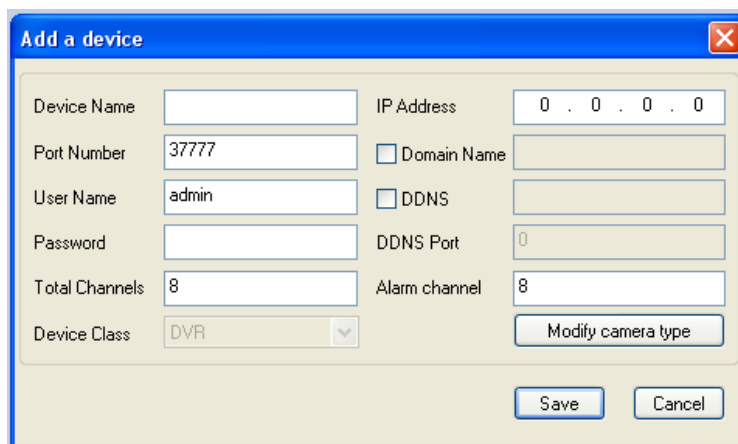
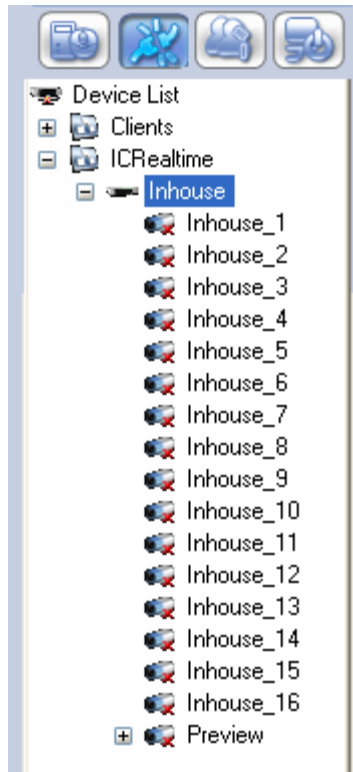


Figure 2-4

Step 5: After you have your device added, close out of the 'Device Management' screen by clicking the X at the top right. You will be prompted back at your viewing screen to reload the new data – choose 'yes'.



*Figure 2-5*

Step 6: To connect to your DVR, you can simply double click on the recorder name. In this example, we double clicked on 'Inhouse', and after a successful connection, you will see your cameras populate underneath the name. To connect to a channel, simply double click on the channel name, and you will see the camera populate in your viewing grid to the left. See Figure 2-5.

### 3) Viewing Live Cameras

If you've been following from the previous chapter, you should be currently connected to your DVR! This chapter will step you through arranging your cameras for live viewing, and also configuring the software to resume your camera positions, automatically.

Step 1: After successfully creating a new connection for the DVR, select the device and then click connect/disconnect button. Figure 3-1.



Step 2: Once connected to the recorder, you will see the cameras tree out beneath the actual recorder itself. To connect to a specific camera, select the appropriate camera below the recorder, and click the connect/disconnect button again. The video stream will load in the window frame that is currently highlighted with a green outline. See Figures 3-2 and 3-3.



Figure 3-2 Note the green outline.

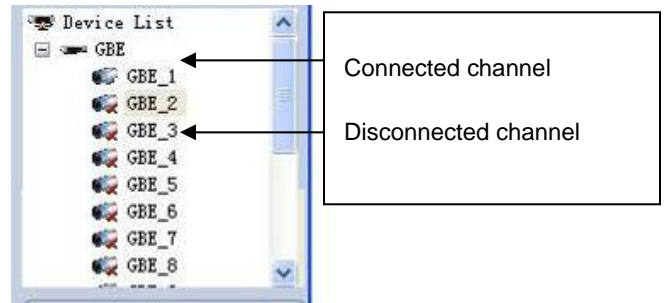


Figure 3-3

Step 3: Select your next window frame by left clicking it – it will be outlined in green. Double click the next camera from your list to stream it to this window frame. Repeat this process until your cameras are connected as desired. You can change your window frame layout at the bottom left of the software. See Figure 3-4.



Figure 3-4



Figure 3-5

From left to right: Transfer Mode, Full-Screen, View 1, View 4, View 6, View 8, View 9, View 13, View 16, View 20, View 25, View 36

Step 4: Once you have your cameras arranged as desired, you can configure the software to automatically resume this layout. To do this, click the 'System' icon (Figure 3-5) at the top left – this will access the 'About' page of the software. From here, place a check next to 'Auto pop-up previous dialogue box'. This will force the software to ask you on startup, if you wish to resume the previous layout before you last closed the software.

## 4) Single or Multi Channel Playback

We previously explained how to connect and view live cameras. This chapter will explain how to perform a search, and also backup the recorded video.

Step 1: Once logged in to the software, click on the Film Strip icon, which says 'Record' if you hover your mouse on it. See Figure 4-1.

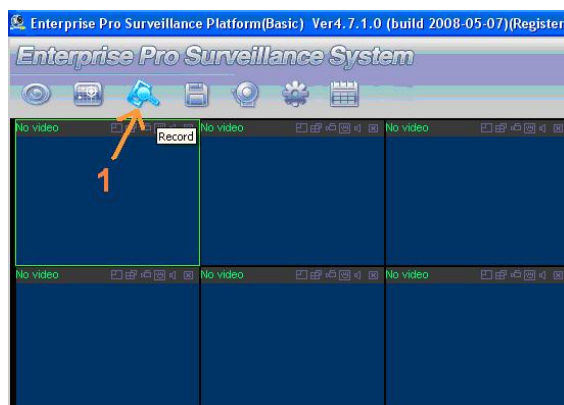


Figure 4-1

Step 2: After you click the 'Record' icon, you should be in the 'Net File Unit' screen. From here, you can do playback for any of your recorders under the device list. To start a playback, you will first need to pick your recorder by double clicking from the 'Device List' on the right window pane. You should see your channels tree out beneath it if you do have a successful connection. You will also be notified underneath the playback bar if you are connected, or if there was an error. See Figure 4-2.

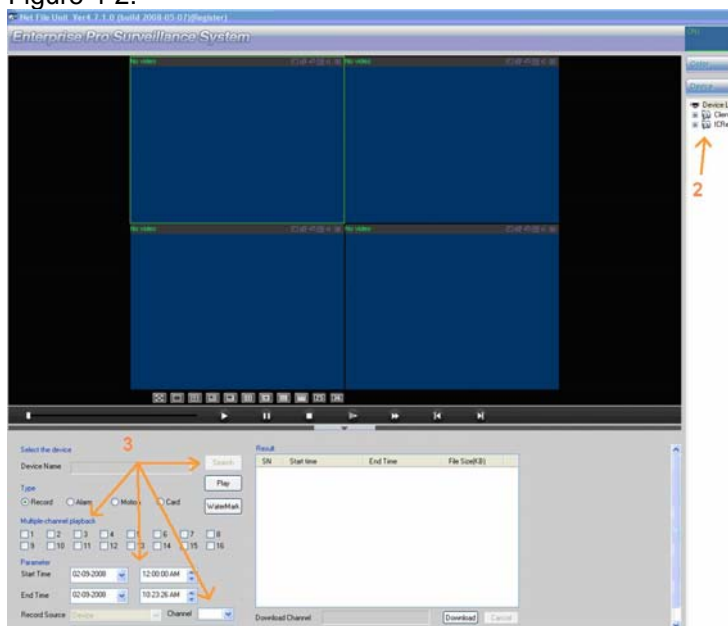


Figure 4-2

Step 3: Once connected, set your search parameters in the bottom left of this screen. Set a 'Start Time' as well as an 'End Time', and pick the 'Channel' (or camera) you wish to search on from the 'Channel' pull down menu. Once you have all these set, you can click the 'Search' button to bring up your recordings under the 'Result' window. Refer to 4-2.

Step 4: Once you have your search results, you can either double click a channel, or highlight the result and click 'Play' to begin playback. If you want to do a synchronized playback on more than one (max: 4) channels at the same time, place a check next to the different cameras under "Multiple-channel playback". From here, click 'Play' like normal after selecting your result, and the extra channels should queue up in your remaining window frames. See Figure 4-3

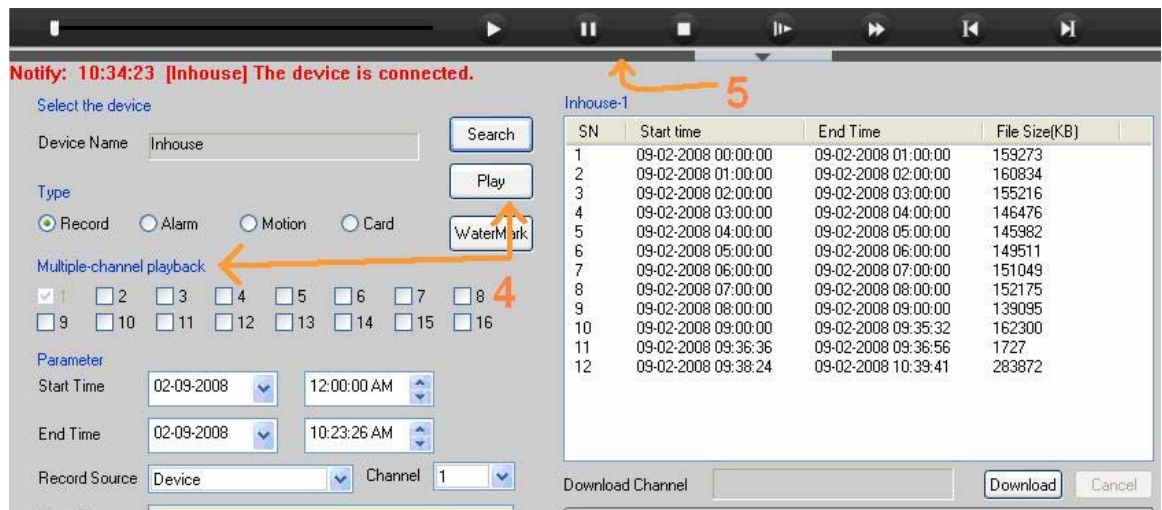


Figure 4-3

Step 5: Lastly, your playback controls are on the toolbar above your results window. Whichever video stream is currently outlined in green (you can change by left clicking) will be the subject of the playback controls. And finally, if you want to download a playback you can place a check next to any result, and click on the 'Download' button at the bottom right.

*For further information or troubleshooting assistance on this software or any of our products, please visit <http://icrealtime.com/support>*