



Quick Start Guide

Quick Start Guide

Table of Contents

1. Basic Configuration of the DVR
2. Scheduling Recording Types (Continuous, Motion, Alarm)
3. Local Network PC Access
4. Remote Network PC Access

1

Basic Configuration of your DVR

- 1 Start by powering up the unit. Wait until it is fully initialized. You should hear a buzzing noise and the front bezels lights should be lit.
- 2 Press "enter" twice on the front panel to get a login prompt. If using a mouse, right click and select "main menu"
- 3 Use the user name "admin" and password "admin" to login as an administrator. Use the user name "user" and password "user" to login as a basic user.
- 4 Select "setting" from the main menu. This menu contains all most common configurations for the unit.
- 5 Select "general" from this menu for changes to the system time, date, and more.
- 6 Use the "encode" menu to change the resolution size, image quality and frame rate of individual channels. By default the resolution is set to CIF, image quality is set to 6 (highest) and frame rate to 30 (highest).

2

Scheduling Different Recording Types

- 1 The DVR is defaulted to continuous recording 24/7 on all channels.
- 2 To change recording parameters go to "setting" from the main menu and choose "record".
- 3 Start by selecting a channel or select "all" to apply to every channel
- 4 Select the day of the week, or choose "all" to apply to every day of the week.
- 5 The periods give you the ability to change different times of the day for which type of recording you want. The three types of recording are regular (continuous), motion (MD) and alarm triggered (alarm).
 - a. Example of a period setup for motion recording for 24 hours
Ex. Period 1 '00:00–24:00' Type Selected: "MD"

3

Local Network PC Viewing

- 1 Minimum System Requirements:
 - a. Operating system: Windows XP, Windows Vista
 - b. Processor: Pentium 4 CPU 2.8GHz
 - c. RAM: 512 MB (DDR1)
 - d. Video: Super VGA (1024 x 768) or higher-resolution video adapter and monitor (128 MB onboard memory)
 - e. HDD: 1Gb of free space (additional if saving captured video)
 - f. Media Drive: DVD-ROM/CD-ROM
- 2 Recommended routers are: Linksys or Netgear brand routers.
- 3 Setup:

- a. Start by configuring the DVR's IP address information by going through the "Setting" menu then to "Network".
- b. The following IP address settings are defaulted to use a Linksys router's defaulted IP scheme. Refer to any other router's manual to understand what the defaulted IP scheme is.
 - ※ IP Address: 192.168.1.108 (DVR's IP address)
 - ※ Subnet Mask: 255.255.255.0
 - ※ Gateway: 192.168.1.1 (Router's IP address)
 - ※ Service port: 32789
 - ※ HTTP: 80
- c. Physically connect a straight through CAT5e cable into the DVR. The net light will turn green.
- d. While utilizing a computer on the same local network, open a new Internet Explorer window. Type in the IP address of the DVR as follows in the address bar; "http://192.168.1.108"
- e. If connected properly, a prompt will appear to download an Active X control. Allow the download and wait until it has finished.



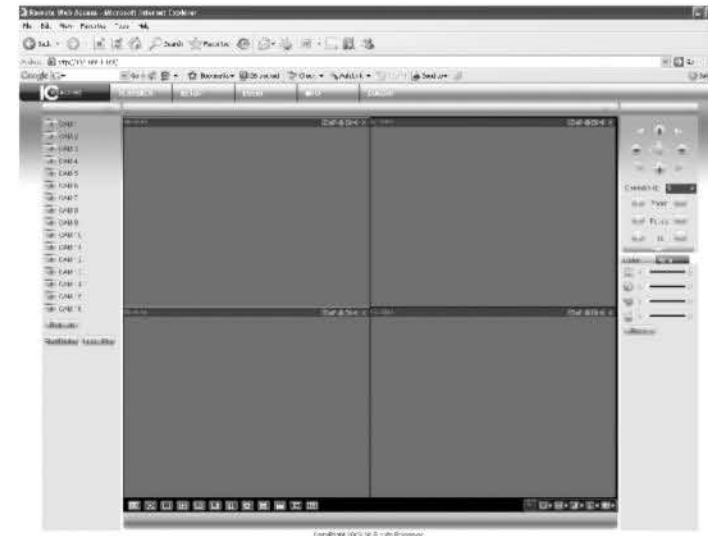
If you can't download the ActiveX file, modify your internet security settings according to:



- a. If the installation was completed successfully, you should now see a blue background with the login prompt below. You may use any account created within the DVR to login.



Once logged into the machine you will have a 4 window view by default. Select the camera on the left that you want to view per window selection.



4

Remote PC Access

- 1 Before starting, be sure that all local steps have been completed and you can log on to the DVR locally. Also make sure you have a proper connection to the public internet and a static public IP address.
- 2 Log into your router/modem to open ports through it. To do this, start by opening a new Internet Explorer page and entering in the IP address of your gateway (same as the router or modem you are using) into the address bar. Using a Linksys as an example, we will type in "http://192.168.1.1" to the address bar and press enter.
 - a. If using a different router/modem, you can refer to the website www.portforward.com which has default guides to lead you through port forwarding on various router/modem models
- 3 The default login for a Linksys router is admin/admin
- 4 Once logged in, go to Application & Gaming
- 5 Make sure you are in Port Forwarding selected at the top.
- 6 The following should be entered in the fields provided:
 - a. Application Name: DVR1 (or any name your want to give)
 - b. Start: 32789(or whatever the FTP port configured on the DVR)
 - c. End: 32789 (same as b.)
 - d. Protocol: Both
 - e. IP Address: 192.168.1.108 (or same as DVR's I.P address)
 - f. Enable: Yes
- 7 Do the same for the HTTP port 80 (or 81 if 80 is blocked by ISP)

**See note on next page.
- 8 If using a different router/modem, you can refer to the website www.portforward.com which has a list of various different models that can help step you through port forwarding.
- 9 Lastly, find the public IP address of the location where the DVR is installed. Use www.Ipchicken.com to easily view your public IP.
- 10 When off site you will use the external IP address to access the DVR.

Note

Some ISPs such as Bellsouth may block HTTP port 80. If this is the case on the router/modem you are port forwarding with, change the HTTP port on the DVR to something else other than 80. After you have changed the HTTP port, be sure to add the changed port to the IP address you are logging in to with. For example if I changed the port to 81 and I was remotely connecting to that DVR it would look like this:

"http://68.153.205.133:81"